

# E-GO LIVING



## TWO BED

48m<sup>2</sup>

A generous two bedroom home. Kitchen, dining and open-planned living.

Perfect for...



Couples or families



Commercial accommodation



Investment



Airbnb

Afford A Home Group specialises in the design and development of Transform A Homes that are **towable**, **registrable** and **expandable**. We are proudly Australian owned and operated, manufacturing our homes using the highest quality materials.

Our two bedroom home is equipped with a full-size kitchen, open planned living and dining, bathroom with overhead shower and generous balcony. At full expansion the home's capacity is 48m<sup>2</sup> under roof.



## Towable

Our towable homes allow for easier transportation, so you can relocate your homes as needed. This reduces transport costs and means the homes are easily registrable as caravans.



## Registrable

No Council approval or associated costs are required to set up your home, as long as it's residing in an area where caravans are legally permitted. Just register and you can have a home that moves wherever life takes you.



## Expandable

Our expandable design may be compact when being transported, but once set up and fully expanded, they're definitely *not* what you'd call a tiny home. The home can double in size within hours using our patented slide-out technology.



# why us?

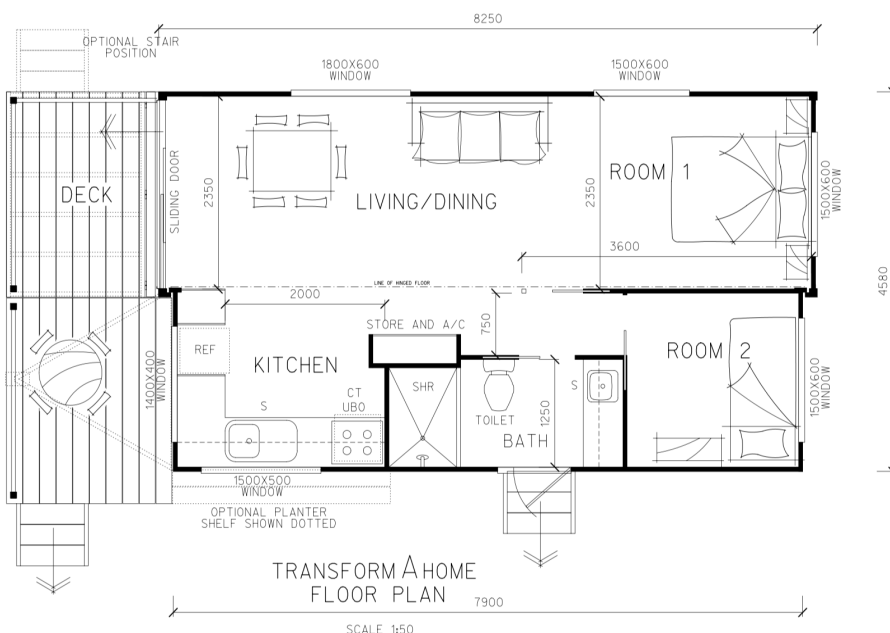
## A BIT MORE INFO

Founded in 2018, the Transform A Home product was created to provide affordable homes to be accessed on demand to meet the growing need for accommodation solutions in both the private and commercial sector. We focus on value rather than being the cheapest, which is why all of our Standard model homes come equipped with reverse cycle air conditioning, instantaneous gas hot water systems, full sized kitchen with oven and gas cooktop, and generous undercover balconies included in our pricing.

By keeping our product on a trailer, we are ensuring that transportation and delivery costs are reduced as well as removing the expense of council fees associated with adding a traditional dwelling onto your property. We're all about making the right product for you and we're working everyday to continuously improve what we offer.



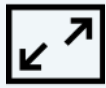
## FLOOR PLAN



## DIMENSIONS

Length of house	8.25m
Length incl. deck	10.3m
Expanded width	4.6m
Towing length	9.85m
Towing width	2.5m
Weight approx.	4500kg
Height	3.6m
Front deck	2m x 4.6m

# 2 BEDROOM PACKAGES



The **Shell** allows for complete flexibility to transform the space to suit your needs.



Included in our **Standard** model homes are all of the daily luxuries needed to feel at home.



The true **Turnkey** solution arrives fully furnished, from bedding to cutlery, to allow for a next-day move in.

## STANDARD MODEL INCLUSIONS

### Living Area

- 2.5 kW Air-conditioning split system reverse cycle unit with remote
- Custom built in wall unit with 2 shelves and double door cupboard including TV antenna plug with cable to external antenna inlet

### Bedroom 1 & 2

- Double or Triple retractable sliding door on floor and ceiling mounted track for bedroom 1.
- Internal sliding door to bedroom 2.

### Kitchen

- Full sized kitchen with overhead and below bench cupboards including a pantry.
- Doors and drawers with modern square look polished handles.
- Internal slide out range hood with light
- Gas burner cooktop
- Electric oven
- 1.5 flush mount sink with draining board
- Chrome flickmixer tapware
- Kitchen benchtop with two double GPO
- Picture window splashback

### Bathroom

- Vanity unit with door and drawers
- Benchtop 1200 mm fitted with chrome plated flickmixer
- Large mirror over vanity
- Large shower base 1200 mm x 900 mm and removable shower head
- Bathroom accessories including: towel ring, robe hook, glass shower shelf, towel rail, toilet roll holder
- Soft close dual flush toilet suite and exhaust fan

### Internal Linings

- Stylish, durable commercial grade vinyl floor to living, bedroom, kitchen and bathroom. Ideal for wet and dry areas which is warm underfoot and easy to maintain.
- Prefinished PWC internal wall lining to bathroom, kitchen and hallway

### Windows & External Sliding Doors

- Windows with fly screens
- Front sliding door with full sized security screen
- Side door access with frosted glass or louvre window

### External Decking & Roof

- Large double deck to front entry
- Black matt aluminium construction finish with handrails
- 2 x aluminium stair case with hand rails

### Walls & Roofing

- Walls formed of durable roll formed 3 mm metal skin to two sides with factory bonded expanded polystyrene fire retardant 50 mm inner core
- Roof comprised durable roll formed 3 mm metal skin to two sides with factory bonded expanded polystyrene fire retardant 100 mm inner core
- Flashings and gutters to roof colorbond
- PVC downpipes to floor level

### Trailer Frame

- 8 m x 2.5 m solid galvanised steel H/D framed chassis with two pac black finish
- 4.5 t rated coupling and 4.5 t chain rating with hammerlocks
- 4.5 t tri axle spring pack

### Electrical & Plumbing

- Full certification and accreditation to Australian Standards
- Complete electrical wiring ready for hardwiring or connection to 15 amp lead
- Earth-leakage, double pole circuit breakers and safety switch
- Three smoke detectors to bedroom 1, bedroom 2 and living area.
- Batten fluoro LED 1200 mm lights throughout
- External LED sensor light above each entry door
- Rheem 20 litre electronic ignition continuous flow gas hot water service externally mounted.

\*inclusions and dimensions subject to change without notice.



## CUSTOM BUILDS

We can tailor your home to your choice of colour selection and specification, which can include: benchtops, splashbacks, tapware, storage solutions, upgrade kitchen appliances and disability access.

Our homes are offered either on wheels or skids based on your requirements. Our homes which are built on a trailer chassis are fully transportable and don't require any council approvals where caravans are legally permitted. This substantially reduces fees such as site engineering and council application fees, that typically are included with a modular or prefab home.

Some of the most popular extras are below:

- Paint internal walls throughout in addition to wall cladding.
- Paint external wall panels in textured paint and colorbond colours.
- Provide additional decking with roof.
- Provide panel or aluminium skirting to full perimeter of including house and balconies.
- Built in cupboards in bedrooms.
- Vertical blinds blackout fabric 90 mm wide blades chain less bottom weights 40 mm track system with wand controls & track insert
- Furniture package
- Longer length homes, up to 10m, can be built for additional space.

## ADDITIONAL COSTS

Every house has additional costs such as site connection to services including electricity, water and sewerage.

Depending on where your house is located will determine our delivery and installation charge, which start from as little as \$1500. We do not require expensive cranes or oversized vehicles to transport our expandable homes.

## PLUG & PLAY



Afford A Home products are designed to be setup and fully functioning within one to two days.



Once we've set up and expanded your home, you simply need to plug into a garden hose, plug in a 240v 15 amp lead, and connect sewerage and grey water.



Complete off-the-grid capability is also available with our eco toilet and solar options.



## GET IN TOUCH

Visit our new office at...



Unit 1/ 127 Olympic Circuit  
Southport 4215 QLD

### Contact us



[www.e-goliving.com.au](http://www.e-goliving.com.au)



[jason@e-goliving.com.au](mailto:jason@e-goliving.com.au)



+61 0406353582